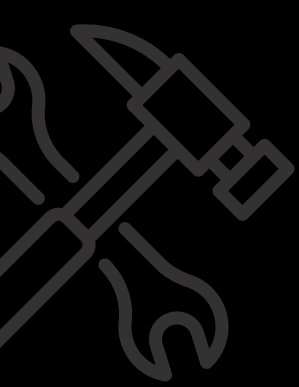


MABROCONA

SHIP REPAIR  
MARINE CONSTRUCTION

SINCE 2000



## OUR SERVICES

### SHIP REPAIR & SHIPBUILDING

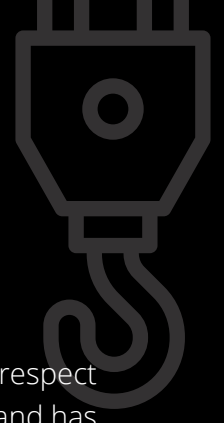
- Hull repair works
- Vessel modernization;
- Repair of hull coating and set;
- Repair of main diesel engines;
- Repair of auxiliary diesel engines;
- Boiler, heat exchange system, pump, compressor, shaft, separator and other equipment repair;
- Repair of electric automatics.



### METAL CONSTRUCTIONS

- Semi-automatic profile cutting line;
- Welding control using ultrasound;
- Various technological metal products production and installation;
- Lifting-transportation mechanisms production and repair;
- Product sandblasting according to the ISO 8501 standard;
- Product painting using the method according to the ISO 12944 standard;
- Product galvanizing according to the ISO 1461 standard;
- Welding using semiautomatic/ electrodes and dismantling/cutting;
- Turning;
- Milling;
- Product loading onto ships or barges and other services.





# FLOATING EQUIPMENT

## MULTICAT WORKBOAT "MERLIN"

Available for charter worldwide, multicat "MERLIN" is capable of all relevant work with respect to assisting of port development, dredging operations. This multicat was build in 2005 and has dimensions of 22m x 7,5m, allowing us to enter into back to back charters for all sorts of other floating equipment required. Shipowner and operator **MABROCONA** will provide highly professional crew with relevant experience upon clients request.



### Category:

Workboat (Multi Cat) Build 2005,  
Cyprus flag, I.N.S.B. classed

### Dimensions:

L – 22m, B – 7,5m  
Draft aft 1,90m (Nozzle & Rudder)  
Draft bow 1,50m

### Equipment:

2 spud legs of 12m;  
deck crane 30 ton/m;  
deck load 14 ton/2m;  
Forward winch (anchor handling/deck);  
Plough with A frame;  
Stern winch (towing or plough);  
hydraulic power pack for crane;

### Engines:

1 Cummins, KTA19M, main engine of 550  
BHP with propeller in nozzle;  
1 retractable bow thruster (360 degrees) of  
180 BHP;

Bollard pull: About 7,5 tons

Sailing area: Full European up to 20 miles  
from a safe haven

### Insurance:

Full cover H&M, P&I, LoH, Crew insurance  
Fuel: Gasoil about 4.500 liters  
Fuel Cons.: About 65 liters per hour all  
engines under full load.  
About 50 liters steaming and about 24 liters  
per hour on power pack and generator.

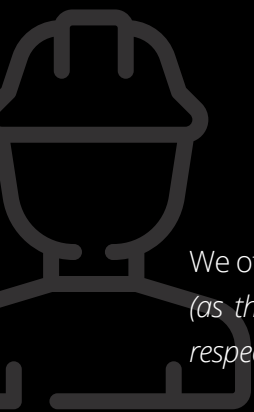
### Fresh water:

About 4000 liters.  
Crew: Operated by 3 man. (Master,  
motorman & deckhand)  
Nav. Eq.: Radar, autopilot, 2 VHF, Chart  
plotter for plough works, GPS, GRS

### Safety eq.:

As per rules for maximum 12 people  
including crew.





## HUMAN RESOURCES

We offer a variety of skilled labor both onshore and offshore. We offer staff with full-inclusive package *(as the price includes necessary certification, travel cost, accommodation and other requirements with respect to the Client)*:

**1. Welders 141**

*(argon welders all type of metal);*

**2. Welders 135, 136**

*(semi-automatic welders all type of metal);*

**3. Welders 111**

*(electrode welders all type of metal);*

**4. Pipe fitters;**

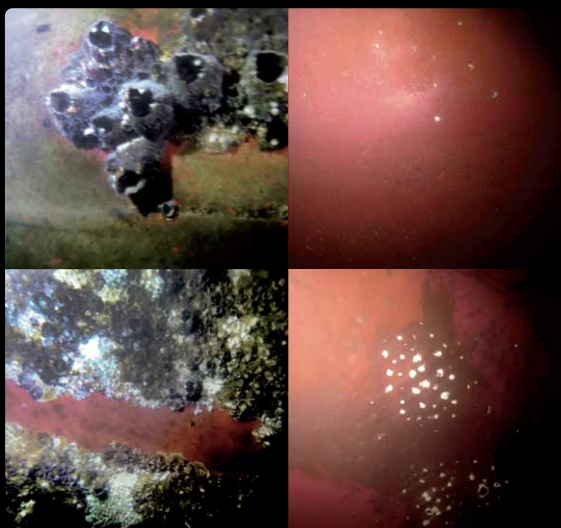
**5. Electricians;**

**6. Offshore painters/ sandblasters;**

**7. Ship builders;**

**8. NDT inspectors;**

## UNDERWATER OPERATIONS



Underwater operations are a part of our expertise. We have all what it takes – skilled riding squads, best equipment and 17 years of experience to perform even the most complicated underwater works upon Clients request. Our operations include:

- Cleaning of ship's hull;
- Cleaning and polishing of propeller;
- UW Surveys with elp of CCTV/ROV;
- UW Classification surveys;
- Side scan sonar and 3D sonar surveys;
- Underwater welding & cutting;
- Propeller cropping;
- Measurement of metal thickness;
- Marine salvage;
- UW Construction;

Our riding squads and mobile equipment are available upon the Clients request worldwide and are approved by: **BV, Lloyds, ABS, RINA, DNV-GL, RMRS, LJA**





## SOME OUR PROJECTS

### H/D REYNAERT

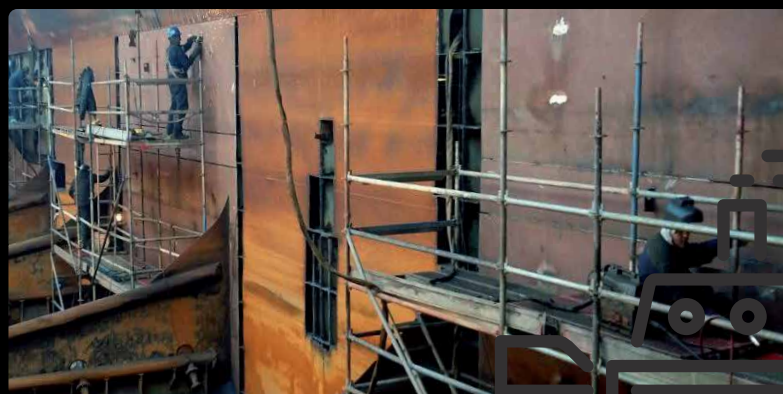
Vessel type: **HOPPER DREDGER**

Year Built: 2007

IMO: 9360726

Gross Tonnage: 5005

MABROCONA carried out different types of hull works during the first half of 2017.



### M/V CEMSEA III

New ballast tank production, fitting, welding and other works were carried out by MABROCONA in the first half of 2017.

Vessel Type: **CEMENT CARRIER**

Gross Tonnage: 3416,

Summer DWT: 4928 t., Build: 2001





## WILSON BERGEN

Vessel type: **GENERAL CARGO**

Year Built: 2016

Gross Tonnage: 1904

IMO: 9557408

Operated by Wilson ASA

MABROCONA carried out welding mast basement works during the first half of 2017.

## GENERAL ELECTRIC (GE)

As a proud contractors of General Electric (GE) we were fully satisfied with an outcome of mutual production of reels. Our engineers, welders, fitters did a great job to fulfill our client's expectations and once again proved that MABROCONA is a reliable partner for both smaller and bigger projects working hard months under the respectful supervision of GE. Right attitude and big experience let us make product on-time with no delays.





# YACHT DUBAI: OVERHAUL OF 4 AUX ENGINES



## GRIGEO, AB

**Grigeo, AB** is the only paper and wood industry company group in Lithuania and one of the largest in the Baltic countries.

The Group includes the following companies: Grigeo, AB, Grigeo Klaipėda, AB, Grigeo Baltwood, UAB, Grigeo Recycling, UAB and Mena Pak, PAT.

MABROCONA was proud to inspect and provide high class machinery repair services on site in Klaipėda. The works were carried out during the first half of 2017.



## COMPANY PROFILE

The Company has a solid reputation and 17 years of experience in the maritime & offshore sectors. We are acting as ship repair specialists, human resource providers, technical managers, ship owners, ship builders, condition surveyors.

Our Company is well-known for doing business responsibly and we are proud to establish friendly and work-oriented relationship with Partners worldwide. Though the Company evolves, the focus still remains on gathering competent and loyal partners, customers, friends, nonprofit organisations & businesses together along with us in our journey.

Every partnership is important and valuable. We are proud to depend on our partners and together achieve our dreams and goals. MABROCONA is proud to do business with:

General Electric, Aarsleff, Boskalis, Dredging International, Strabag, Van Oord, BLRT Grupp, Tallink, Axess AS, JSC Klaipeda Ship Repair, Baltnautic, Wilson Ship Management AS, Hanzevast, DAMEN Shipyard, Nitron Group, GriGeo and other valuable partners.

## OUR PARTNERS





# CERTIFICATES & MEMBERSHIP

As a reputable service provider we always take great care to meet the standards by certifying every single employee. That's why as of year 2016 MABROCONA has become RMRS certified company.

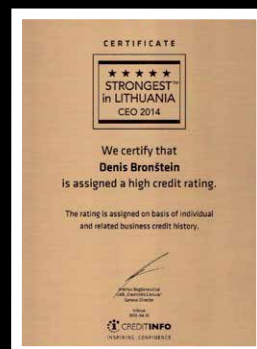
**CODE 22014000 / CODE 2200900 /**  
**CODE 22014001 / CODE 22014002**



**MABROCONA** is a member of Association of Lithuania Shipbuilders and Repairers



**MABROCONA** is a member of Lithuanian defence and security industry association



## CONTACTS

Company name: **UAB MABROCONA**

Registration number: 141915426

VAT number: LT419154219

Local phone: +370 4630 1290

Mobile phone: +370 6555 6966

Bank: DNB bankas

Bank code: 40100

Swift (BIC) code: AGBLLT2X

IBAN: LT754010042301281352

### POST AND VISIT ADDRESS:

Vilties str. 1-1, LT-92227, Klaipeda,

Office work hours: I-V: 09:00 - 17:00;

### GENERAL INQUIRIES:

[info@mabrocona.com](mailto:info@mabrocona.com)

[www.mabrocona.com](http://www.mabrocona.com)

[www.multicat.pro](http://www.multicat.pro)

**Welcome to MABROCONA**





MABROCONA

[www.mabrocona.com](http://www.mabrocona.com)